

**CAUTION**

**LOOK OUT  
FOR FORKLIFTS**

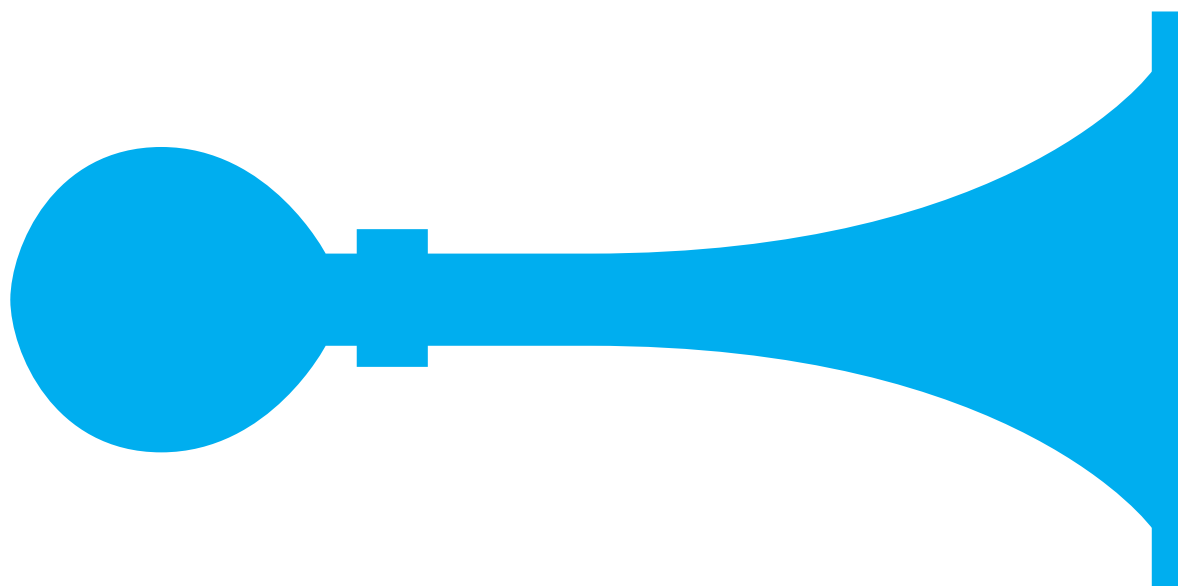


# DANGER



**Forklifts  
only.**

**No pedestrian  
traffic.**



**Sound horn**



# CAUTION

**Slow  
down**

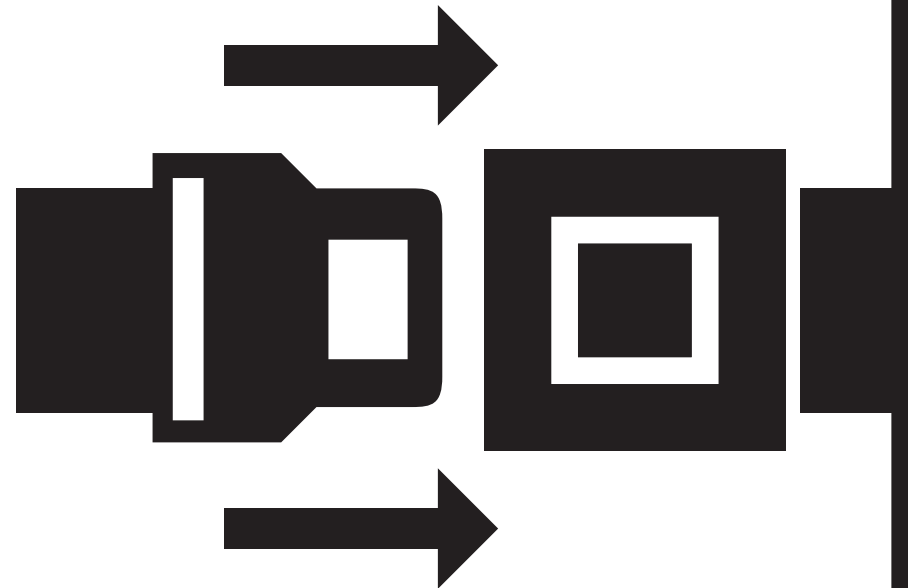


**Pedestrian traffic**



# SEAT BELTS

**MUST BE WORN  
IN THIS VEHICLE  
AT ALL TIMES**



# ***NOTICE***

**WHEELS MUST BE  
CHOCKED BEFORE  
LOADING OR  
UNLOADING**



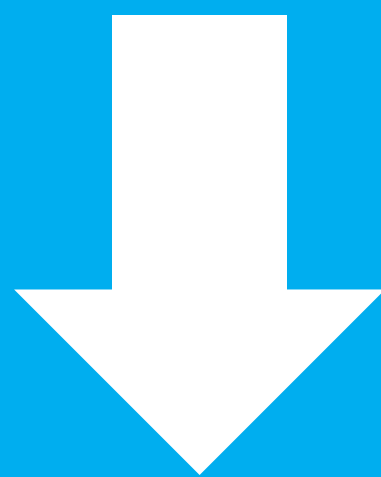
**DANGER**

**Operation by  
authorized  
personnel only.**

# LOWER FORKS

# WHEN NOT

# IN USE



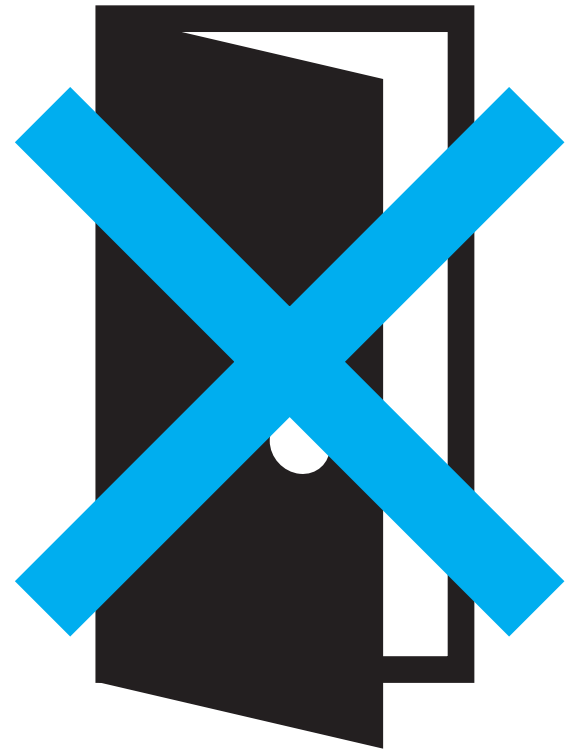


**DO NOT BLOCK**

**EXIT**

# CAUTION

**THIS DOOR  
MUST BE KEPT  
CLOSED**



# EXIT DOOR

EMERGENCY USE ONLY





**FIRE DOOR**



**KEEP CLEAR  
AT ALL TIMES**

**ENTRANCE  
ONLY**

# ***NOTICE***

**THIS DOOR  
MUST BE  
KEPT LOCKED**



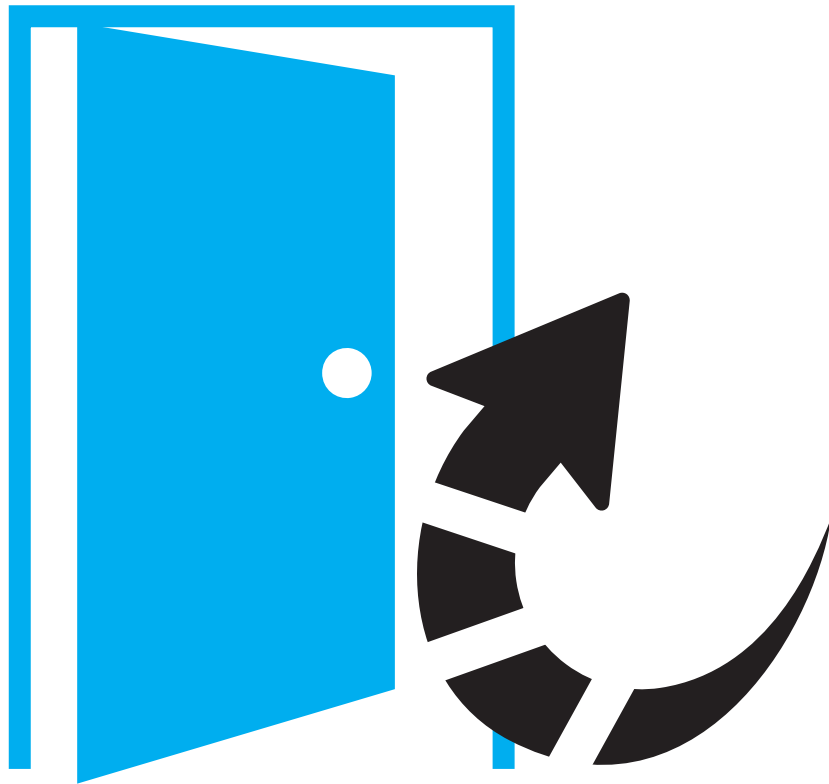
# CAUTION

DOOR  
SWINGS  
INWARD





# CAUTION



**Open  
door  
slowly**



**SAFETY FIRST**

**WORK  
SAFELY**

# BEND KNEES



# WHILE LIFTING

# NOTICE

**REPORT  
ALL INJURIES  
AT ONCE**

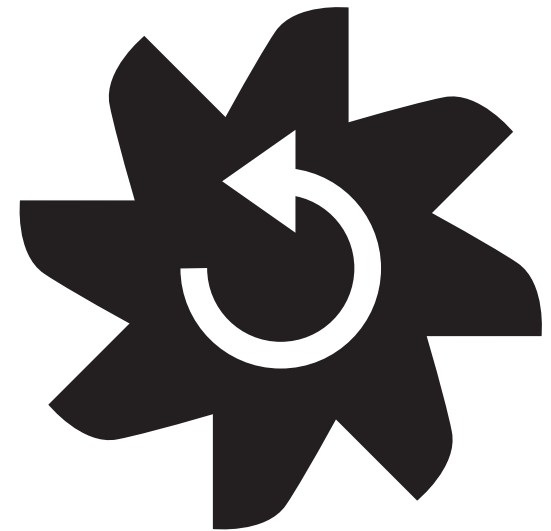




# WARNING

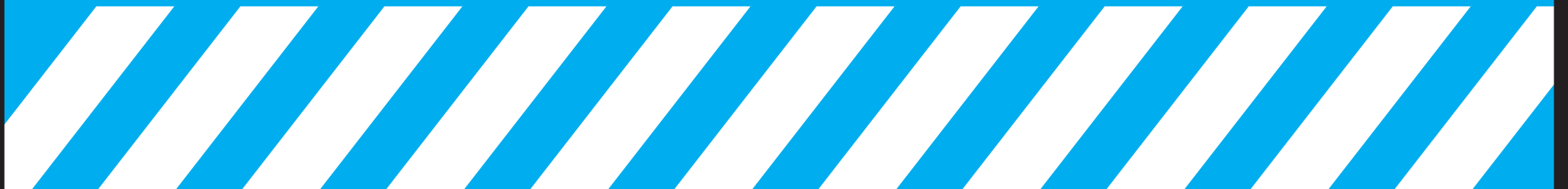
## **Rotating parts.**

**Entanglement of hands,  
feet, hair, clothing,  
or accessories can occur.**



# CAUTION

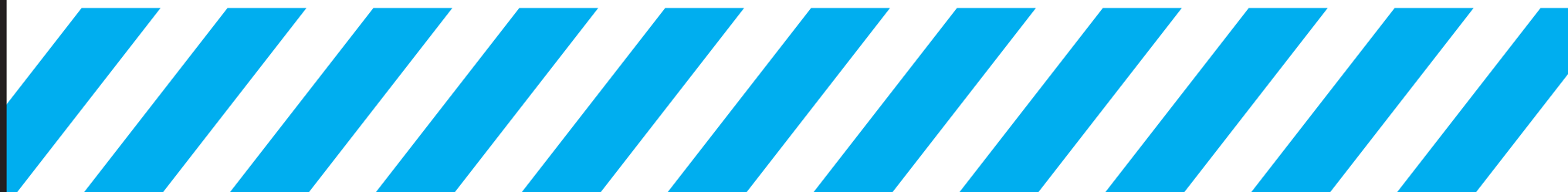
MOVING  
CONVEYOR





# WARNING

**CONVEYOR MAY START  
WITHOUT NOTICE**





# CAUTION



**Chemical  
waste  
storage  
area**



# CAUTION



**All drums  
must be  
labeled**



**SATISFACTION**

**100%**

**GUARANTEE**

***THINK QUALITY!***

**QUALITY**

**IMPROVEMENT IS  
A NEVER ENDING  
PROCESS**

***THINK QUALITY!***

**WHEN WE ARE OUT OF**

**QUALITY**

**WE ARE OUT OF**

**BUSINESS**

***MEASURE  
TWICE***

***CUT ONCE***



**QUALITY**

**HOLD**

**HOLD FOR**

**INSPECTION**

**ACCEPTED**



**REJECTED**



**Don't Forget  
To Wash  
Your  
Hands**



# EMPLOYEES

**MUST WASH HANDS  
BEFORE  
RETURNING  
TO WORK**



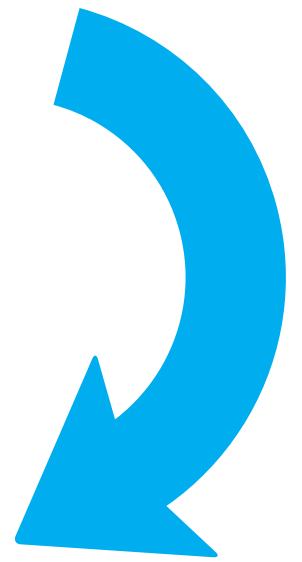
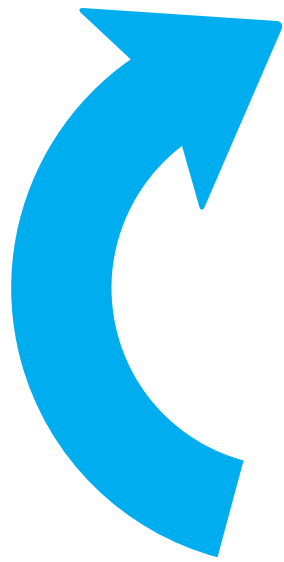
**EMPLOYEES**

**MUST WEAR**

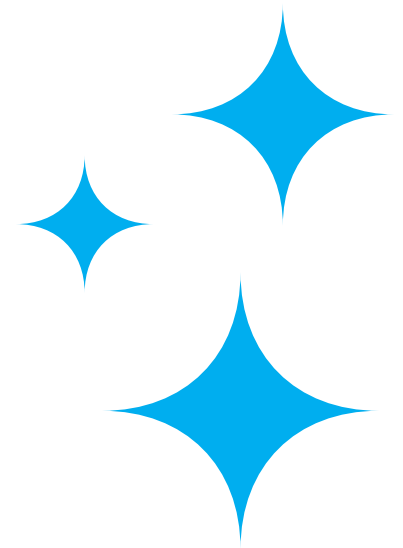
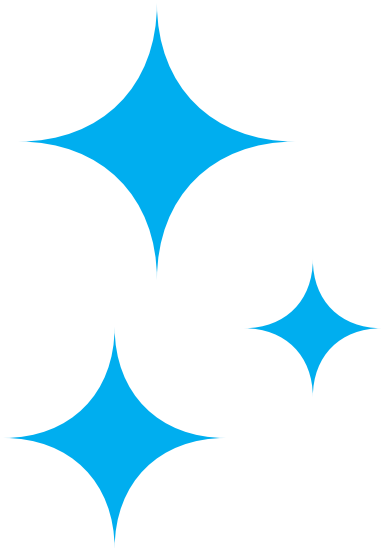
**HAIR NETS**

# NOTICE

**Put Things  
Back In Their  
Proper Place**



**KEEP  
AREA  
CLEAN**



**THIS  
IS YOUR  
BATHROOM**



**HELP KEEP IT CLEAN**

**DEPOSIT TRASH**

**HERE**



# RECYCLABLE



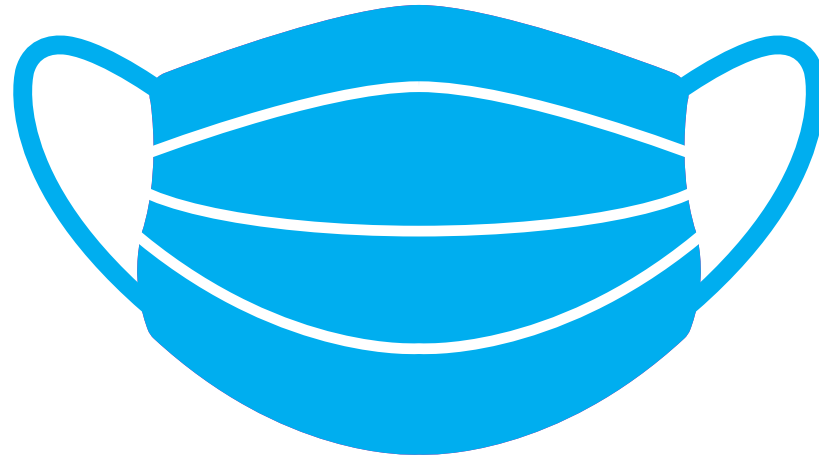
# PAPER ONLY



# DISINFECT YOUR HANDS



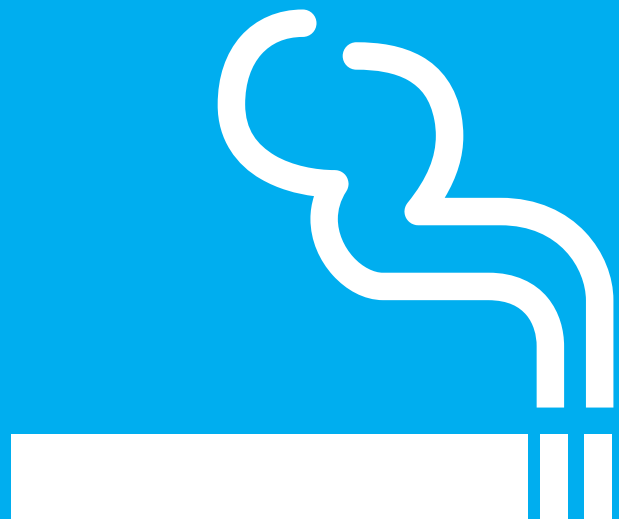
**ALWAYS  
WEAR A MASK**



**IN THIS AREA**



**NO SMOKING**



**SMOKING  
PERMITTED  
IN THIS  
AREA**



**Turn Cell Phones Off**



**Please  
silence your  
cell phone**



**No food or  
drink allowed  
in this area**

**NO**

**FOOD OR  
BEVERAGES**



**ALLOWED**

**BEYOND THIS POINT**



# Think Green

**If you are the last to  
leave the room,  
please turn off  
the lights!**



**SORRY**

**TEMPORARILY  
OUT OF SERVICE**